

# Truck Crane AK 42



## Technical Data





Permissible gross vehicle weight (t)	18
Max. payload (kg)	3,000 (optional 6,000)
Max. extension length (m)	41.9 (optional 44.9)
Working height up to jib (m)	27.5
Jib extendable (m)	6.3 / 10.3 / 14.4
Jib payload (kg)	3,000 / 1,500 / 1,000
Boom angle (degrees)	90
Jib angle (degrees)	180
Pivoting range (degrees)	endless
Hook speed (m/min)	60
Range for crane operation at 500 kg (m)	28.0
Range for crane operation at 1 t (m)	23.4
Range for crane operation at 2 t (m)	15.2
Range for crane operation at 3 t (m)	11.4
Range for crane operation at 6 t (m)	5.7
Drive	PTO / 400 V hybrid

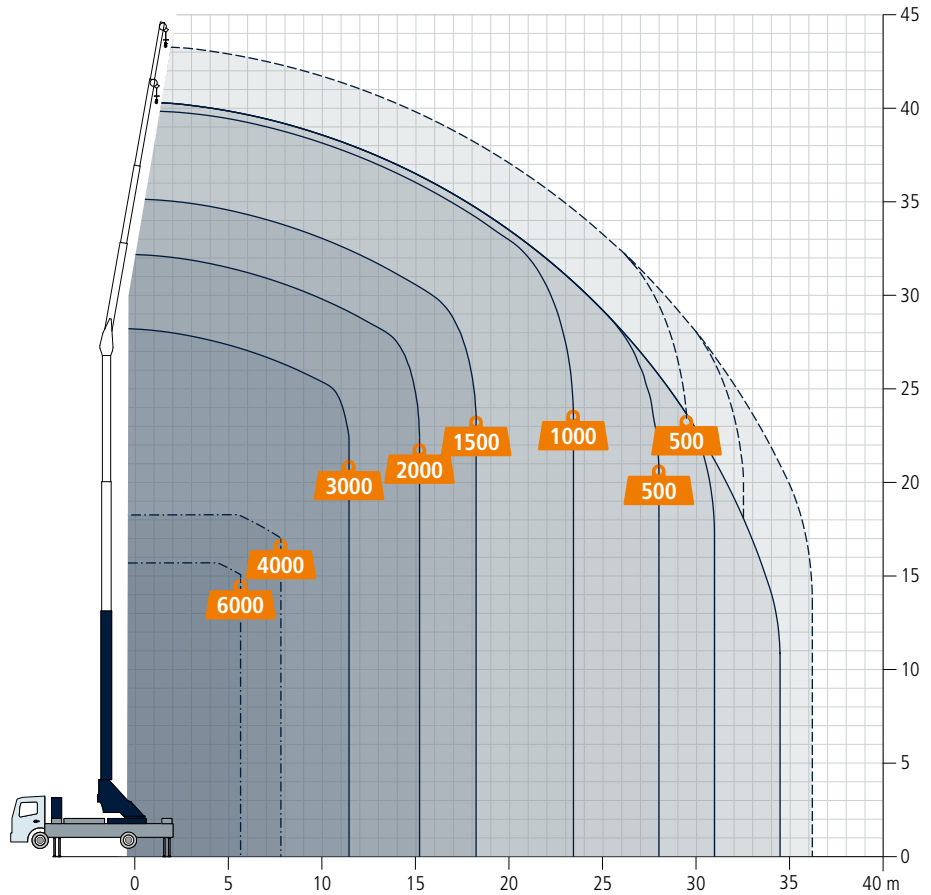
The new truck crane AK 42 works faster than ever and, thanks to its innovative boom design made of high-strength fine-grained steel, impresses with surpassing lateral stability, particularly in the range of 1 to 3 tons load. With an attached load of 1.5 t it reaches working ranges of 18 m with a maximum height of 24 m. The maximum lifting capacity of 6 t and extension lengths reach up to 42 m.

The performance of the hydraulic system is increased up to 70% compared to previous systems so that the AK 42 operates at significantly improved speeds. As a result, the crane is ready for use in short time and several crane functions can be operated at the same time without loss of speed.

Available with **Böcker**Connect

## Working range crane operation

-  Load in kg
-  Single-fall operation
-  Two-fall operation
-  With jib-extension (3 m)

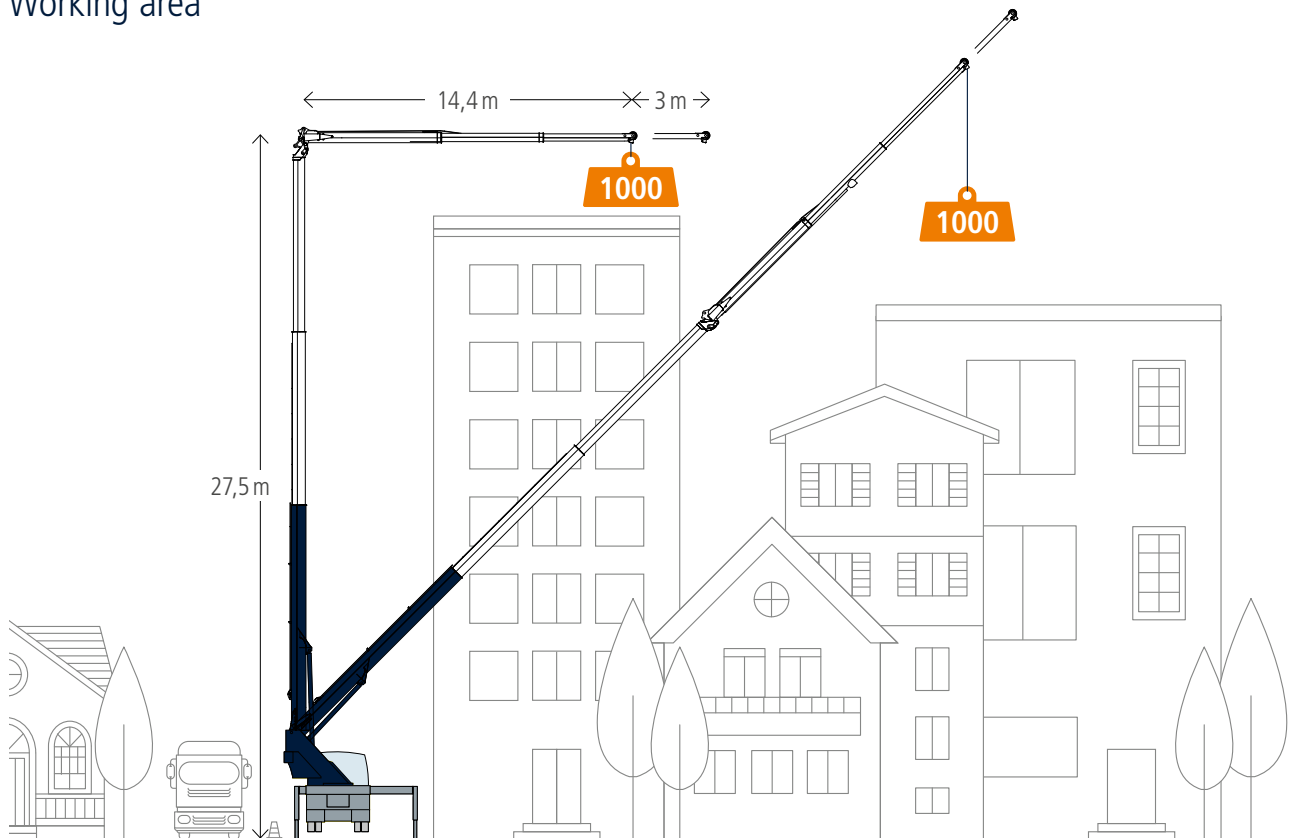


## Jib



Preliminary data.  
All weights in kg, all measurements subject to fluctuation.

## Working area

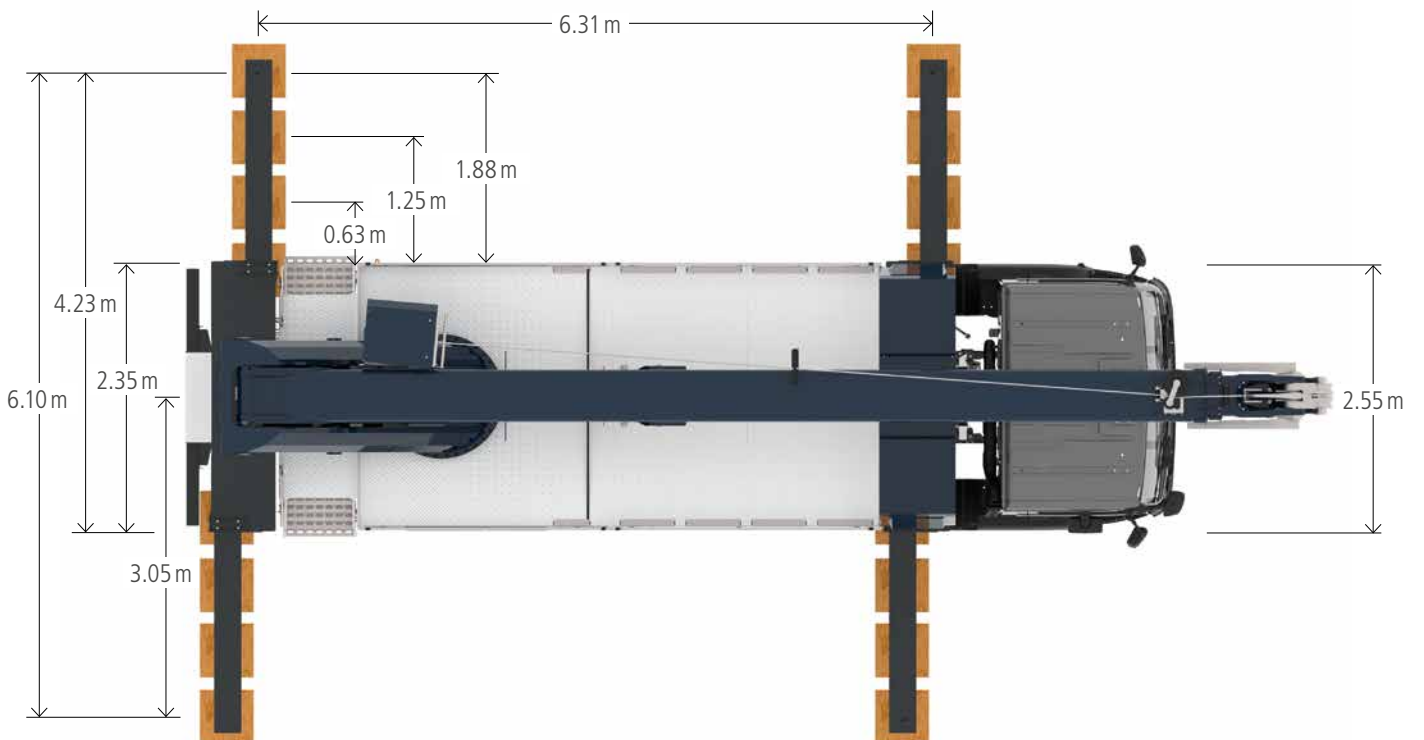
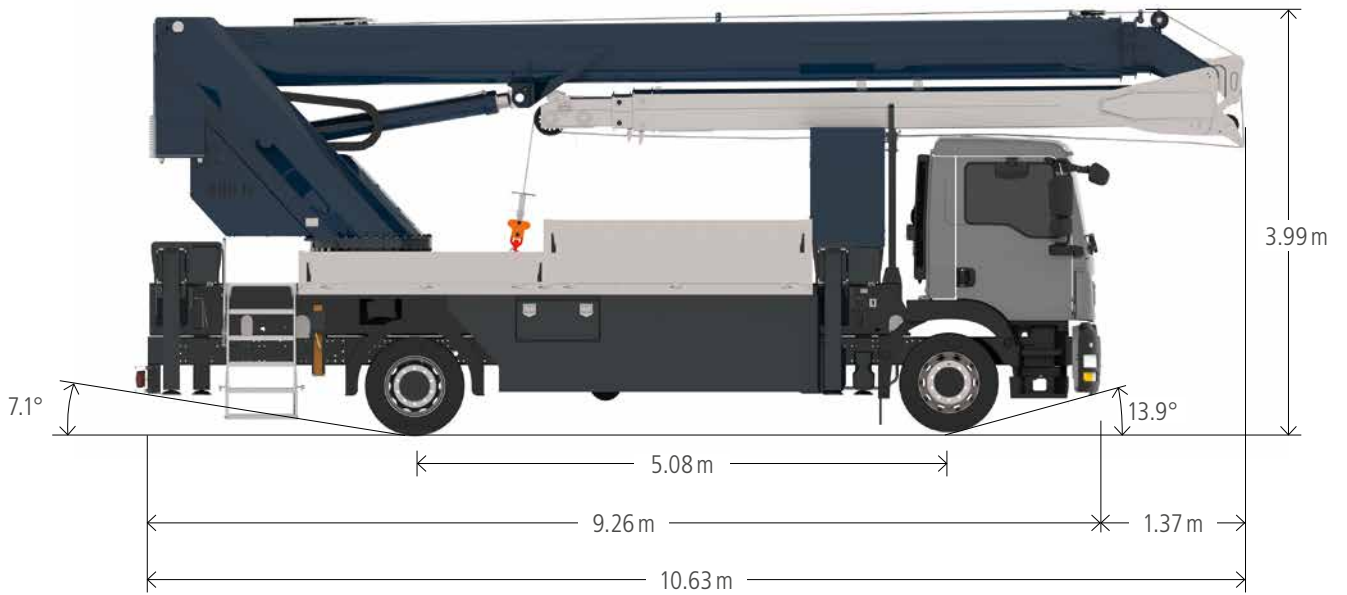


The all new AK 42 is the first truck crane of its class which can operate the boom completely vertical at 90 degrees angle to the vehicle. The new telescopic boom including a powerful hydraulic fly jib which can be extended hydraulically to more 14 m is the basis of this innovative boom geometry. It impresses in various working situations e.g. when working closely to facades. The endless slew range opens up a circular working range enabling the crane to reach any point by the shortest possible distance. The vertical positioning and the strong joint add the innovative tower crane function the AK 42. When the main boom is upright while the fly jib is in almost right angles, loads can be lifted horizontally into a building by extending the fly jib.

The AK 42 is mounted on a 18 t truck chassis and comes with unique features. Being available with a strong electric motor, it can be turned into a hybrid crane. Thanks to its minimum outrigger spread of only 2.55 m it can be set up with a compact footprint while being compatible to the most powerful Böcker access cage (up to 600 kg load). The AK 42 is equipped with the latest control technology including working range indication in live mode, transfer control with two cameras, automatic rope tracking, changeover between fast and creep mode, slew- and boom-angle restriction as well as go-home function.



Dimensions



**Böcker**

www.boecker.de

**Böcker Maschinenwerke GmbH**

Lippestr. 69-73  
59368 Werne

Fon +49 2389 79890  
Fax +49 2389 79899000  
info@boecker.de