

# Crane Technology

Truck and trailer cranes



**Böcker**  
MY WAY TO THE TOP

# Outstanding crane technology

**The sky is the limit with Böcker innovations**

To be able to develop our crane technology on an ongoing basis, we not only observe the latest technical developments in the market, but also enter into close communication with partners from a wide variety of trades. We do this so we can understand the specific needs of the trade and industry to develop truck and trailer cranes that not only meet the expectations of our customers, but actually surpass them. Today, our cranes are leading in the field in terms of technology and quality thanks to more than three decades of experience in building aluminium cranes and the growing expertise of working with high-tensile steel.

## High performance makes the difference

Being the quality and innovation leader in the area of lifting technology for our customers, we owe this to our highly qualified and long-term workforce employees. As a company active on the global stage with a worldwide presence, we are not only known for our high-tech and expertise; but we also take a sense of responsibility with a clear commitment to its German location. Therefore, at Böcker we strive to ensure it does not lose sight of its own tradition, it still remains loyal to the corporate philosophy of this third-generation family-owned business: Be it as a customer or an employee, people are at the centre of everything we do.







## Extension lengths up to 55 metres and payloads of up to 12 tonnes

Böcker crane technology offers you a reliable and adaptable solution whenever you need to safely and efficiently lift large and bulky loads to lofty heights. Besides having extension lengths of up to 55 m and payloads of up to 12 t, our truck and trailer cranes are characterised by extremely high safety standards, a comparatively low weight and compact dimensions. For example, it is easy to transport Böcker cranes from one site to the next and set them up without requiring a lot of space.





# Developed responsibly, reliably and with pride

## Advantages of the Böcker crane technology

The Böcker performance promise

### 01 Durability and environmental friendliness

Böcker crane technology convinces primarily through uncompromising durability. Thus, we only use galvanised steel hydraulic piping. We regularly perform long term load tests with our cranes, during which the telescope and outrigger cylinders, chassis, sliding rails and wire ropes must verifiably prove themselves. Those components that we do not manufacture at our own site, we order from known and reliable manufacturers who offer a world-wide service.

Due to the stability of the value of our crane technology, we therefore, not only offer you security in the cost calculation but also a safe investment.

Environmental protection is a high priority at Böcker and we continuously invest in the development of environmentally friendly technology. In doing so, we primarily focus on reducing CO<sub>2</sub> emissions through sustainable electric drives and state-of-the-art engine technology with maximum combustion efficiency. You continue to benefit from optimum performance with excellent emission values and reduced fuel and oil consumption. The biodegradable hydraulic oil also plays a part in the durability of your Böcker crane, as well as reducing maintenance costs and protecting the environment.

#### Overview of the benefits

- Excellent cost efficiency due to low operating and servicing costs
- Very safe investment due to higher than average value stability and the Böcker guarantee promise
- Environmentally friendly due to E-drives, biodegradable hydraulic oil and reduced petrol consumption



# Effective working and highest reach

## 02 The Böcker mast and telescope system

We manufacture our mast and telescope systems from an optimal combination of highly tensile steel and aluminium alloys, thanks to the decades of experience in consequent light-weight construction. Benefit from our enclosed mast system, which offers you maximum stability, safety and torsional rigidity; and furthermore, it is extremely reliable.

And for erecting the mast, we also rely on a long proven combination. Remain on top of every task thanks to the use of hydraulic cylinders in combination with chains or ropes. You will also be impressed by the fully hydraulic extending boom, which helps you reach comfortable boom lengths of up to 14 m.\*

### Overview of the benefits

- Precise work thanks to the stability and torsional rigidity of the profiles
- Sensitive and judder-free telescoping even with high loads and flat mast angles
- Highest reaches even up to the back of the roof for effective work without having to relocate the crane due to the fully hydraulic extendible boom\*
- 180° position of the jib joint and tower crane function (AK 42 and AK 48)



\*optionally available for some models









# Work in very confined spaces

thanks to unsurpassed flexibility and safety

## 03

### The Böcker support technology

The Böcker support technology lets you extend each individual crane outrigger as far as required and thus every available cm of space can be used - a decisive advantage especially in restricted spaces. This fully variable extension of the outriggers allows you flexible positioning and the optimal erection geometry of your crane, positively influencing the crane reaches.

The practical self-levelling function warrants fast and safe erection of the crane, which can be regulated comfortably from beginning to end using the remote control, and thus can also be carried out easily from a distance.

Furthermore, the enclosed and redundant safety concept allows weather-independent crane stability. The site, in turn, is optimally secured by the flashing LED light that can be integrated into every outrigger. Also take advantage of the largest possible ground clearance and overcome uneven ground thanks to the large lift of the Böcker support technology.

### Overview of the benefits

- Erection and work in the smallest spaces thanks to fully variable extension of every individual outrigger
- Fast and comfortable crane erection thanks to self-levelling and wireless colour remote control
- Optimal crane stability and securing of the site
- Greatest possible ground clearance through the large lift of the outriggers







# Stay connected – with the smart customer portal BöckerConnect

The digital connection to your Böcker crane

## 04

### BöckerConnect

The digital portal informs you online about your fleet and provides all relevant data of the connected cranes at a glance. After a personal login you will get an overview of the current status and location of your cranes. In addition, the master and performance data of each crane are shown in a detailed view. Statistics on how the crane was used and performed can also be called up.

In addition to the visualization and evaluation of the device data, the portal provides information about upcoming inspection dates and events. Technical documents, such as data sheets, operating instructions or maintenance plans, and the contact information of your direct contact persons are also stored centrally. On the new online platform, you can also view the current position of your cranes at any time and receive a configurable theft notification as soon as the cranes leave a previously defined radius of action. In addition, thanks to the location determination via GPS, it is possible to track the travelling route of the cranes.

For data acquisition, the connected cranes are equipped with an integrated remote maintenance module that transmits the information to a central cloud via mobile phone network. The continuously transmitted diagnostic data and sensor values as



well as the service history stored in the portal enable a differentiated remote maintenance and well-founded technical support by the Böcker customer service.

#### Overview of the benefits

- Current overview of all machine data available via the customer portal
- GPS location determination and theft alerts are freely configurable
- Diagnostic function for remote maintenance minimizes machine down-times

# The clever answer to every challenge

**Innovative control concept by Böcker**

## 05 The Böcker operating concept

We at Böcker rely on the particularly intuitive wireless remote controls which come with full colour displays (depending on the model) from HBC-radiomatic. The user-friendly and clear depiction of the operating situation is supported by self-explanatory pictograms, thereby ensuring intuitive and safe operation.

Already during erection, constantly updating reach dials make it possible to position the crane optimally for the target area. During operation, several crane functions can be controlled simultaneously, which makes working with a Böcker crane particularly efficient.

As standard, every Böcker wireless remote control allows diagnostics readings in the display. Fuel level and maintenance intervals are also displayed. A hook camera is an optional extra, which transmits the image onto the display of the wireless remote control (depending on model) - giving the crane operator an optimal view of the work area.

### Overview of the benefits

- Particularly intuitive wireless remote control
- Optimal erection without repositioning thanks to the constantly updated reach display
- Efficient work thanks to concomitant operation of several crane functions
- Diagnosis function as standard in the display
- Optional hook camera with image transfer





# 06

## BICS control

Our state-of-the-art and TÜV-tested BICS (Böcker intelligent computer-based safety) control makes it possible for you to work sensitively, precise and with low pendulum effect. Maximum work range and maximum reach are automatically verified depending on the outrigger position and the attached load. This automatically guarantees safe work at all times.

When using near power lines, the selectable turn and lift angle restriction helps you remain within the available work space. Depending on the work situation, the BICS control allows you to swap between fast and crawler gear, while the redundant sensors warrant highest fail safety, function and operating safety.

Several software features create operating comfort both in the fore- and background, which is in a class of its own. For instance, the BICS control prevents the load from becoming stuck in any position and also provides a gentle start and precise control of all the crane functions, independent of the operating conditions.

In addition, Böcker's Fall Protection Mode (FPM) enables the roofer, carpenter or craftsman to be secured by the crane at lofty heights. Böcker offers the FPM for many crane models. As the first supplier, Böcker also offers this mode for trailer cranes.

## Overview of the benefits

- The software developed by Böcker warrants greatest possible flexibility and optimised reach in any situation while offering highest possible safety at the same time
- Several software features create excellent operating comfort both in the fore- and background
- Using the crane in Fall Protection Mode (FPM)\*



\*optionally available for many models

# Standing out in every application

Unique comfort and individuality



## 07

### The Böcker platform technology

Thanks to the Easy-Lock-System, many Böcker truck and trailer cranes are refitted as fully fledged lifting platforms with at the ease. Depending on the application and type of crane, you can choose between several platforms with payloads of between 200 to 600 kg. The working cage, which can be hydraulically extended during operation to a width of up to 3.5 m and rotated through 440°, is particularly suitable for use in working areas that are difficult to access. As the platform does not need to be removed to change locations, you are able to move the crane to a different place whilst working with the platform.

Thanks to the automatic levelling system of the platform, you can always work safely and comfortably, no matter what the external circumstances are. Every Böcker access platform comes with power sockets, which are either powered by a power supply available on the job site or by integrated generator systems (depending on the model).

#### Overview of the benefits

- Maximum flexibility through the combination of crane and platform technology
- Thanks to the Easy-Lock-System swapped over with a ease
- Several applications covered by different platform models
- Highest work comfort thanks to automatic levelling and on-board electrics









# TRUCK CRANES



# Groundbreaking technology thanks to decades of experience

and patented expertise in aluminium crane building

## 08

### The drive concept

As a matter of principle, Böcker truck cranes always work without separate ancillary drives and, thanks to the well-considered and long-established concept of a single engine for lorry, crane and platform, this not only reduces fuel usage but also operating costs and the maintenance work. This is supplemented by more comfortable handling, one tank, one fuel and one refuelling process.

The one engine concept offers more than enough power reserve for every operating situation. The battery operated emergency control warrants functionality even in the case of engine failure.

### Overview of the benefits

- Low fuel usage and maintenance requirements lead to reduced operating costs
- Comfortable handling, one tank, one fuel, one refuelling process
- Highest failure safety thanks to the battery-operated emergency control system



# More sustainability in everyday working life

## A special responsibility

We at Böcker place utmost importance on the environmental sustainability of our crane technology. That is why we use only bio-degradable – and durable – hydraulic oil of the lowest water hazard class.



## 09 Powerful electric drives

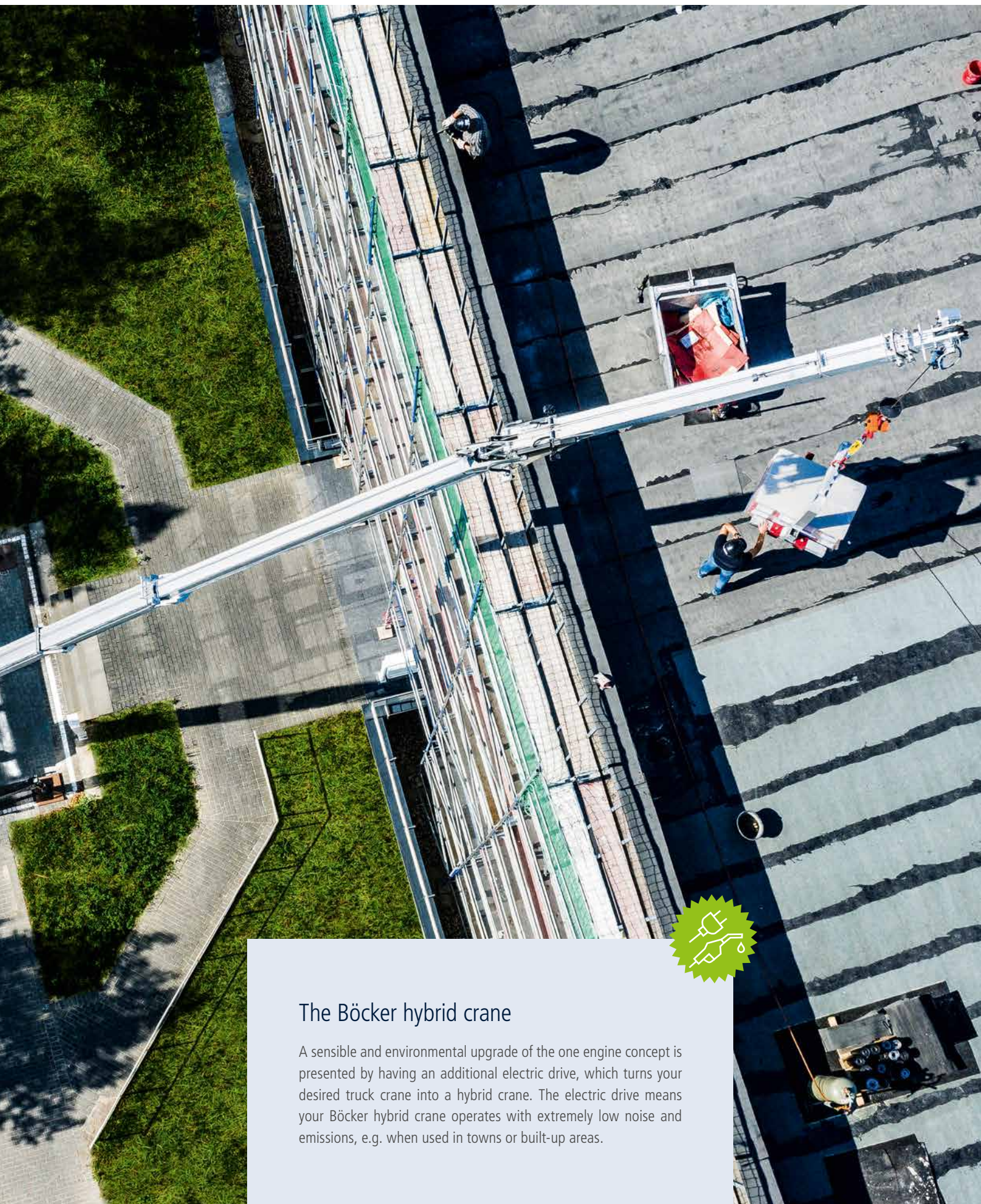
Nearly all Böcker cranes are also available with a powerful, low-noise and low-emission 400 V electric drive. Depending on the model a 13 or 30 kW drive is used which turns your Böcker crane into a hybrid crane. Depending on the available power supply, the fuse protection (13 kW-16/32 A or 30 kW-32/63 A) can be set on the crane by means of a preselection switch in order to always achieve the optimum performance values on site. For truck cranes, the eReady kit also offers the option of initially equipping the crane only for later retrofitting of the E-drive. Selected crane models can also be equipped with a rechargeable battery and charge at any classic household socket with 230 volts.

### Overview of the benefits

- Low-noise and low-emission operation in city centres and residential areas
- Sustainable work





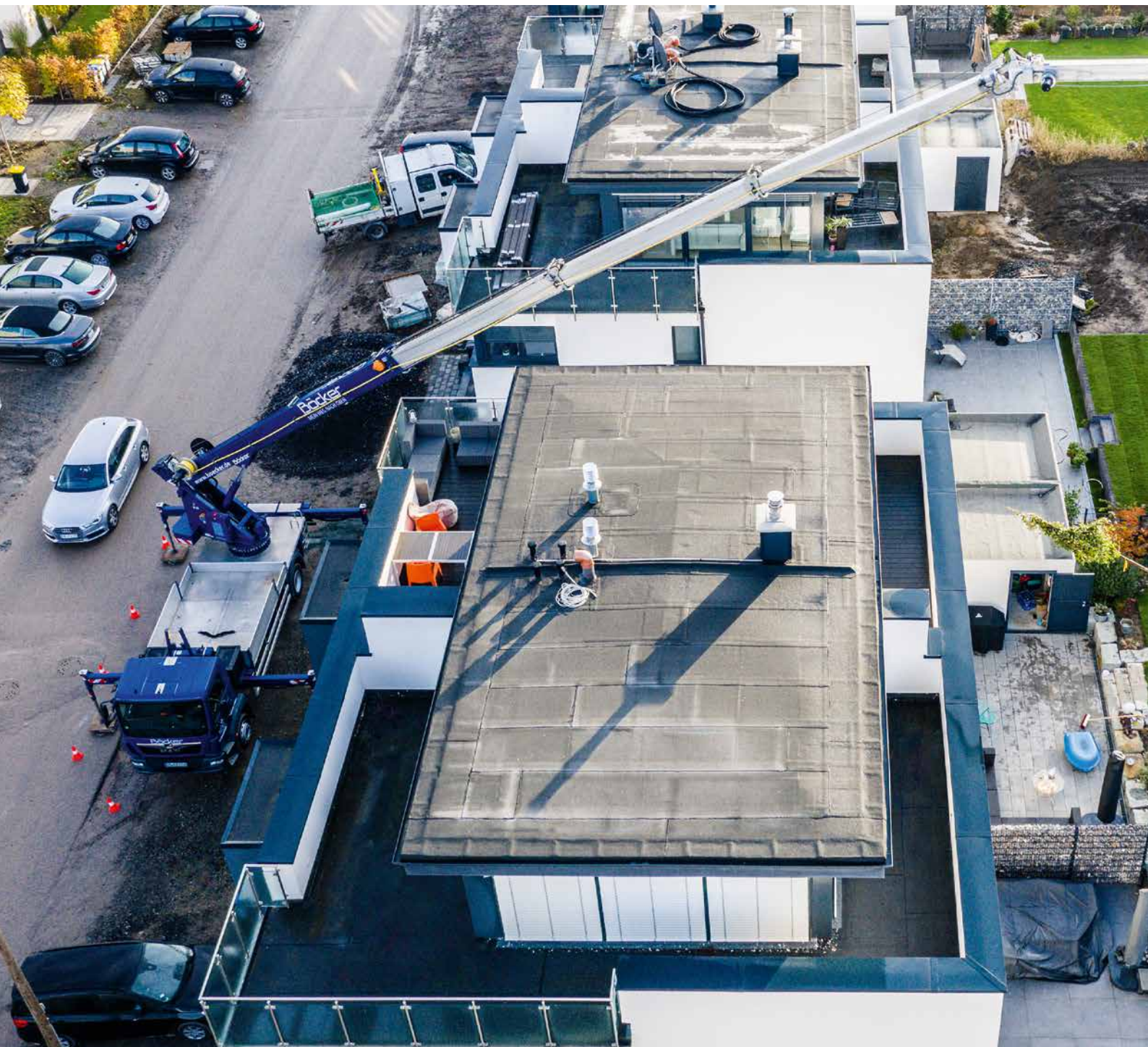


## The Böcker hybrid crane

A sensible and environmental upgrade of the one engine concept is presented by having an additional electric drive, which turns your desired truck crane into a hybrid crane. The electric drive means your Böcker hybrid crane operates with extremely low noise and emissions, e.g. when used in towns or built-up areas.



Low space requirement in  
the most confined spaces





# 10 Unique design of turret and loading area

The uniquely small slewing radius of the turret specific to the model makes it possible to use it supported on one side and with traffic flow. Benefit every day from the low space requirements and use your Böcker truck crane even in the tightest spaces in cities or housing estates.

A clever transport system on the load bay warrants safe and space-saving transport of your Böcker accessories. The unique superstructure of the Böcker turrets and load bays offers many functions – a really clever system in every aspect!

## Overview of the benefits

- The small slewing radius makes it possible to erect the crane in the smallest of all spaces and with flowing traffic



# DIRECT COMPARISON

## Truck cranes



AK 37

AK 37e

### Technical Data

Permissible gross vehicle weight [t]	7.49 / 8.6 (8.8)
Transport height [m]	MAN 3.89 / DB 3.93
Transport width [m]	2.55
Transport length [m]	8.35
Outrigger footprint on both sides max. [m]	5.55
Outrigger footprint on one side max. [m]	3.95
Max. payload [kg]	1,500 (opt. 3,000)
Max. extension length [m]	35 (opt. 37)
Working height up to jib [m]	23.6
Jib extendable [m]	4.9 / 8.0 / 11.1 (opt. 13.1)
Jib payload [kg]	1,500 / 800 / 500 / (250)
Boom angle [degrees]	85
Jib angle [degrees]	162
Pivoting range [degrees]	+/- 310
Hook speed [m/min]	45
Range for crane operation at 250 kg [m]	28.0 (opt. 30.0)
Range for crane operation at 500 kg [m]	21.0 (22.0 / 450 kg)
Range for crane operation at 1 t [m]	14.0
Range for crane operation at 2 t [m]	8.0
Range for crane operation at 3 t [m]	5.7
Range for crane operation at 4 t [m]	-
Range for crane operation at 6 t [m]	-
Range for crane operation at 12 t [m]	-
Range / Working height max. [m] with rotating basket 250 kg (PK 250-D) with rotating basket 350 kg (PK 350-D) with rotating basket 600 kg (PK 600-D)	21.1 / 30.5 - -
Range / Working height max. [m] with non-rotating basket	22.0 / 30.5 at 200 kg
Drive	PTO / 400 V hybrid / 230 V hybrid with battery

Subject to technical changes. Measurements can fluctuate slightly. All specified values are maximum values.

Extensive information is available on the internet at [www.boecker.de](http://www.boecker.de) or in our technical datasheets for the respective product.





AK 42

18
3.99
2.55
10.63
6.10
4.23
3,000 (opt. 6,000)
41.9 (opt. 44.9)
27.5
6.3 - 14.4 (opt. 17.4)
3,000 - 1,000 (500)
90
180
endless
60
28.0
23.4
15.2
11.4
7.8
5.7
-
28.9 / 44.1 24.7 / 38.6 21.2 / 36.5
29.6 / 44.0 at 250 kg
PTO / 400 V hybrid



AK 46/6000

18 / 26
3.99
2.55
MAN 10.49 / DB 10.66
6.10
4.23
3,000 (opt. 6,000)
44 (opt. 46)
33.8
5.3 - 11.0 (opt. 13.0)
3,000 - 800 (400)
85
162
+/- 310
45
38.0 (39.0)
34.5
26.0
17.7
13.8
11.0
8.0
-
33.1 / 43.3 28.0 / 40.0 -
34.3 / 46.0 at 250 kg
PTO / 400 V hybrid



AK 48  
AK 48e

26 (27)
3.99
2.55
10.89
6.10
4.23
3,000 (opt. 6,000)
49 (opt. 52)
34.7
6.3 - 14.4 (opt. 17.4)
3,000 - 1,000 (500)
90
180
endless
60
32.8
28.5
19.6
15.4
11.1
8.5
-
33.8 / 51.2 29.5 / 45.7 25.8 / 43.6
34.5 / 51.1 at 250 kg
E-PTO or PTO / 400 V hybrid



AK 52

26 / 32
3.99
2.55
11.32
8.00 / 6.40
5.17 / 4.37
3,000 (opt. 6,000/12,000)
52 (opt. 55)
38.0
6.3 - 14.3 (opt. 17.3)
3,000 - 1,000 (500)
85
157
endless
50
40.0
34.0
24.0
18.5
13.0
10.0
5.0
37.5 / 53.0 33.0 / 51.0 30.0 / 51.0
37.5 / 53.0 at 250 kg
PTO



**TRAILER CRANES**



# A consistent well-considered concept from erection to operation

## 11

### The outrigger concept

Our patented swivelling outriggers and foldable swivelling outriggers from high-tensile fine grain steel warrant the greatest possible flexibility and stability. The auto-levelling function of the outrigger system not only ensures the crane is automatically positioned optimally, but also offers extremely comfortable handling.

Thanks to the large lift of the outriggers, you can enjoy a large ground clearance of up to 50 cm, making sites on sloping or uneven ground easy to master for the trailer cranes by Böcker. A further advantage of the well-considered superstructure concept of our trailer cranes is the practical swivelling drawbar for models AHK 30 KS and AHK 36. The chassis length is reduced by 1.90 m by simply pivoting the drawbar. The particularly compact space requirements resulting from this considerably reduce the footprint of your Böcker trailer crane during use.



### Overview of the benefits

- Patented swivelling and foldable swivelling outriggers from high-tensile fine grain steel for highest flexibility
- Optimal and comfortable erection thanks to the auto-levelling function
- High ground clearance of up to 50 cm thanks to large lift of the outriggers makes it possible to use it on sloping ground
- Particularly compact manoeuvring dimensions and small footprint due to reduction of the overall length by two meters thanks to the swivelling drawbar

# Optimal performance take-off and precise manoeuvring

## 12

### The drive concept

Böcker trailer cranes offer a choice of a 15.5 kW Honda petrol engine and an 14.9 kW Kubota diesel engine. Furthermore, the AHK 36 and AHK 30 KS are available as battery trailer crane with an 8 kW electric motor and 230 V charging technology. Thanks to the state-of-the-art engines and noise reduction technology, all drive types offer low noise emissions.

The optimal power take-off in all the operating situations guarantees that the maximum load is lifted at any time. Also benefit from the low fuel usage of the Böcker trailer cranes at constantly high performance reserves. Part of the well-considered drive concept is also the service-friendly accessibility of all components, which also results in lower maintenance costs. In the unlikely case of an engine failure, the battery-operated emergency control ensures the functionality of your Böcker trailer crane.



### Overview of the benefits

- You have the choice: Honda petrol engine (15.5 kW), Kubota diesel engine (14.9 kW) or E-motor (8 kW) with 230 V battery technology
- Battery operated emergency control
- Guaranteed lifting of the maximum load through optimal performance take-off
- Low fuel consumption at constantly high performance in all operating situations
- Reduced noise emissions thanks to the most up-to-date technology





## 13 The manoeuvring concept

The standard tandem axle used in Böcker trailer cranes warrants an optimal distribution of the ground load at all times and safe manoeuvring over obstacles. In this way, inclines of up to 25 % can be mastered without problem – even when wet. And thanks to the sensitive control of the manoeuvring drive via wireless remote control, you will master even the narrowest driveways.

The well-considered manoeuvring concept of our Böcker trailer cranes ensures that the axles and jockey wheel are not overloaded even under the most adverse building site conditions and with the narrowest drive movements. Excessive tyre wear is prevented through the form-locking gear wheel drive.



### Overview of the benefits

- Optimal distribution of the ground load and safe manoeuvring over obstacles thanks to tandem axle
- Axles are guaranteed not to be overloaded
- Sensitive control of the manoeuvring drive for narrowest gateways
- Mastering inclines of up to 25 %
- Interlocking drive prevents increased tyre wear

# DIRECT COMPARISON

## Trailer cranes



### Technical Data

### AHK 30

Permissible gross vehicle weight [t]	3.5
Transport height [m]	2.61
Transport width [m]	2.36
Transport length [m]	9.23
Max. payload [kg]	1,500
Max. extension length [m]	30.0
Working height up to jib [m]	22.3
Jib extendable [m]	4.8 / 7.4 / 9.1
Jib payload [kg]	1,500 / 350 / 250
Boom angle [degrees]	85
Jib angle [degrees]	158
Pivoting range [degrees]	+/- 310
Hook speed [m/min]	50
Range for crane operation at 250 kg [m]	21.1
Range for crane operation at 500 kg [m]	13.9
Range for crane operation at 800 kg [m]	9.5
Range for crane operation at 1 t [m]	8.1
Range for crane operation at 1.5 t [m]	3.6
Range for crane operation at 2 t [m]	-
Range for platform operation at 250 kg [m]	-
Range for platform operation at 100 kg [m]	-
Working height in platform operation max. [m]	-
Drive	Petrol engine / Diesel

\* in combination with petrol engine only

Subject to technical changes. Measurements can fluctuate slightly. All specified values are maximum values.

Extensive information is available on the internet at [www.boecker.de](http://www.boecker.de) or in our technical datasheets for the respective product.





AHK 30 KS  
AHK 30e KS

3.5
2.53
2.29
9.36
1,500
30.0
22.4
4.8 / 7.4 / 9.1
1,500 / 350 / 250
85
158
endless
50
21.1
13.9
9.5
8.1
3.6
-
-
-
-
Petrol engine / Diesel / 400 V hybrid* / 230 V with battery



AHK 36  
AHK 36e

3.5
2.84
2.30
9.20
1,500 (opt. 2,400)
34.0 (opt. 36.0)
22.7
4.9 / 8.0 / 11.1 (opt. 13.1)
2,400 / 1,500 / 800 / 500 / (250)
85
162
endless
50
23.1 (23,5)
16.6
12.9
10.0
7.5
5.4
15.8
18.8
29.0
Petrol engine / Diesel / 230 V with battery



# ACCESS



# SORIES

Access platforms, Crane Accessories, Roof Tile  
Tongs, Roof Stands, Pallet Forks and more



# Access platforms

Crane technology by Böcker goes a long way, using the matching Böcker accessories brings you even further! Already for decades, we have been in intensive exchange with our customers to be able to adapt our cranes to the specific needs of the individual trades.

And this is why we offer access platforms as well as for every trade and industry the matching crane accessories in different sizes: Roof tile grippers, tile distributors, tipper baskets and pallet forks, tool boxes, additional lighting and much more. Whereby the payload and reach are not restricted due to the consequent aluminium light-weight construction of our accessories.

## Overview of the benefits

- Multiple applications thanks to the large number of accessories on offer for every trade.
- Still exceptional payloads and reaches thanks to the consequent aluminium light-weight construction



## Technical Data

---

Max payload (kg)

---

Number of persons max.

---

Power supply in basket (V)

---

Rotation angle (degrees)

---

Extension width (m)

---

### **suitable crane models**

---

AK 37

---

AK 42

---

AK 46/6000

---

AK 48

---

AK 52

---

AHK 36

---





PK 200-1

PK 250-1

PK 250-D

PK 350-D

PK 600-D

200

250

250

350

600

2

2

2

3

5

110 / 230  
(External supply line)

110 / 230  
(External supply line)

110 / 230  
(External supply line)

110\* / 230\* / 400\*

110\* / 230\* / 400\*

-

-

+/- 30

+/- 90

+/- 220

-

-

-

-

0,50 (left and right)



# Crane Accessories



## Hook Camera

- Camera at the top of the mast with transmission to the colour display of the radio control



## Rear View and H-Outrigger Cameras

- Rear view camera on the truck and outrigger cameras on the boom rest with separate display in the drivers cab



## Aircraft Warning Lights

- Aircraft warning light on the jib extension or rope deflection



## Anemometer

- Anemometer at the boom with data transmission to the display of the radio control



## LED Rotating Beacon

- At the winch



## LED Rotating Beacon

- At the construction



## LED Worklight

- On the joint, load hook, access platform, loading area and for perimeter lighting



# Roof Tile Tongs



## Aluminium Roof Tile Tong DZZ 3-600

- For 1, 2 or 3 rows of vertical concrete roof tiles or 2 rows horizontal clay tiles
- Adaptation to package widths by means of marking out
- Including safety guard and automatic changing function

Load capacity	600 kg
Net weight	80 kg
Opening width approx.	300 - 1,200 mm
Depth of immersion	200 mm
Cheek length	1,200 mm



## Aluminium Roof Tile Tong DZZ 2-400

- For 1 or 2 rows of concrete roof tiles and clay tiles, loose, bandaged or wrapped in shrinking foil
- Including swivelling safety basket and automatic changing function

Load capacity	400 kg
Net weight	82 kg
Opening width approx.	150 - 900 mm
Depth of immersion	130 mm
Cheek length	1,200 mm



## Aluminium Roof Tile Tong DZZ 1-200

- For 1 row of concrete roof tiles and clay tiles, loose, bandaged or wrapped in shrinking foil
- Including swivelling safety basket and automatic changing function

Load capacity	200 kg
Net weight	56 kg
Opening width approx.	240 - 500 mm
Depth of immersion	100 mm
Cheek length	1,200 mm



## Aluminium Multipurpose Tong MZZ 2-360

- Suitable for loose clay tiles, bandaged or wrapped in shrinking foil
- Including safety net

Load capacity	360 kg
Net weight	45 kg
Opening width approx.	410 - 1,070 mm
Depth of immersion	175 mm
Cheek length	1,200 mm

# Platforms and Roof Stands



Aluminium Roof Tile  
Platform DZV 400  
for Cranes

Load capacity	400 kg*
Net weight	39 kg
Transport width	1,350 mm
Transport length	1,450 mm
Transport height	210 mm
Loading area size	1,290 x 850 mm
Roof inclination	up to 50 degrees

\*two rows of roof tiles



Aluminium Roof Tile  
Platform DZV 200  
for cranes

Load capacity	200 kg*
Net weight	22 kg
Transport width	950 mm
Transport length	1,350 mm
Transport height	210 mm
Loading area size	1,290 x 415 mm
Roof inclination	up to 50 degrees

\*one row of roof tiles



Aluminium Roof Tile  
Platform DZV 200-F  
for lifts

- Particularly space-saving transport

Load capacity	200 kg
Net weight	14 kg
Transport width	460 mm
Transport length	1,470 mm
Transport height	340 mm
Loading area size	1,100 x 450 mm
Roof inclination	up to 50 degrees





## Rolling Platform

- Particularly space-saving transport
- 8-fold adjustment for adaptation to roof inclination
- Special profile rubber rollers
- Including safety hook

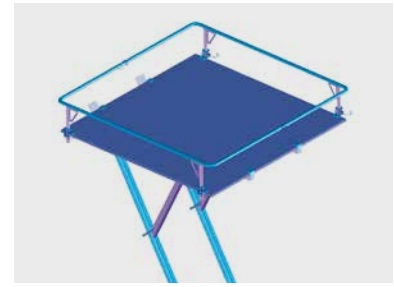
Load capacity	200 kg
Net weight	16 kg per pair
Width	420 mm



## Roof Stand DS 680 A

- Mounting on the rafters
- Particularly easy to mount
- Particularly space-saving transport

Load capacity	600 kg
Net weight	6.3 kg
Width of load (max.)	800 mm
Roof inclination	20 - 60 degrees



## Roof Stand DS 600 A

- Including crane eyes
- Loading area with plug-in guards
- Mounting on the rafters

Load capacity	600 kg
Net weight	65 kg
Loading area	1,700 x 1,700 mm
Roof inclination	20 - 60 degrees



## Aluminium Man Basket KS 200

- Including telescoping facade running wheels

Load capacity crane	min. 410 kg
Net weight	67 kg
Load capacity	200 kg, 2 persons
Length exterior dimensions	1,600 mm
Width exterior dimensions	1,080 mm
Height exterior dimensions	2,315 mm



## Warning Sign

- Protection of the construction site as a warning sign
- Stable galvanised design

Net weight	11.5 kg
Width	550 mm
Height	1,000 mm
Erection depth	600 mm
Own advertising	up to 400 x 500 mm

All rights reserved for changes.

# Pallet Forks and Tipper Baskets



## Aluminium Pallet Fork PG 1000 A

- Balancing the centre of gravity by adjusting the eye hook of the crane
- Including safety chain

Load capacity	1,000 kg
Net weight	66 kg
Height	1,850 mm
Prong length	1,109 mm
Prong adjustment	440 - 910 mm



## Aluminium Pallet Fork PG 1800 A

- Balancing the centre of gravity by adjusting the eye hook of the crane
- Including safety chain

Load capacity	1,800 kg
Net weight	80 kg
Height	1,998 mm
Prong length	1,000 mm
Prong adjustment	350 - 935 mm



## Aluminium Pallet Fork PG-A-1800 A

- Balancing the centre of gravity automatically by means of pressure springs
- Including safety chain

Load capacity	1,800 kg
Net weight	80 kg
Height	1,980 mm
Prong length	1,000 mm
Prong adjustment	350 - 935 mm



## Aluminium Long Goods Fork LG 3000

- Balancing the centre of gravity automatically by means of pressure springs
- Including safety chain

Load capacity	200 kg
Net weight	25 kg
Fork height	758 mm
Fork width	590 mm
Length	3,000 mm





## Aluminium Tipper Basket KM 500/315

- Tilting function by means of automatic swivel shackles

Load capacity	500 kg
Net weight	45 kg
Volumetric capacity	315 l
Trough width	890 mm
Trough length	1,253 mm
Trough height	523 mm



## Aluminium Tipper Basket KM 1000/625

- Tilting function by means of automatic swivel shackles

Load capacity	1,000 kg
Net weight	70.5 kg
Volumetric capacity	625 l
Trough width	1,000 mm
Trough length	1,460 mm
Trough height	623 mm



## Aluminium Tipper Basket KM 1000/1000

- Tilting function by means of automatic swivel shackles

Load capacity	1,000 kg
Net weight	90 kg
Volumetric capacity	1,000 l
Trough width	1,200 mm
Trough length	1,386 mm
Trough height	747 mm



## Aluminium Basket 800

- Baskets stackable

Load capacity	230 kg
Net weight	12 kg
Basket width	800 mm
Basket width with stacking lugs	911 mm
Basket length	800 mm
Trough height	300 mm

All rights reserved for changes.



**Böcker Maschinenwerke GmbH**

Lippestr. 69-73  
59368 Werne  
Fon +49 2389 79890  
info@boecker.de

[www.boecker.de](http://www.boecker.de)

**Böcker Belgium N.V.**

Boomsesteenweg 101  
2630 Aartselaar  
Fon +32 3 4576241  
info@boecker.be

**Böcker France SAS**

Siège Social:  
Lot A6-02, Rue Enrico Fermi  
77400 Saint-Thibault-des-Vignes  
Adresse SAV:  
4, Allée des Performances  
93160 Noisy-le-Grand  
Fon +33 1 48406767  
info@boecker.fr

**Böcker Italia S.r.l.**

Sede Legale:  
Corso Porta Nuova 11  
37122 Verona (VR)  
Sede Operativa/Amministrativa:  
Via delle Nazioni 6  
37012 Bussolengo (VR)  
Fon +39 45 8780399  
info@boecker.it

**Böcker Nederland B.V.**

De Geerden 22  
5334 LE Velddriel  
Fon +31 418 571444  
info@boecker.nl

**Böcker Schweiz AG**

Industriestr. 17  
4800 Zofingen  
Fon +41 62 7976262  
info@boecker.ch

**Boecker UK Limited**

Unit B Grazebrook Industrial Park  
Hulbert Drive, Dudley  
West Midlands UK-DY2 0XW  
Fon +44 1384 476580  
info@boecker.co.uk